



ALL-IN-ONE

www.scangle.com

MOBILITY



KIOSK



PANELS PC



PRINTERS



DISPLAYS



ACCESSORIES



Professional POS hardware manufacturer

K1Compact multi-configuration(s)
integrated POS system

Simple, accessible and powerful!

Available all in one POS terminal (8" FHD 4:3 type), **K1** is equipped with a multi-touch capacitive projected panel (PCAP technology) that is shock and scratch resistant.

This modular point of sale terminal is 58mm thermal receipt printer.

OS: Windows or Android are available.

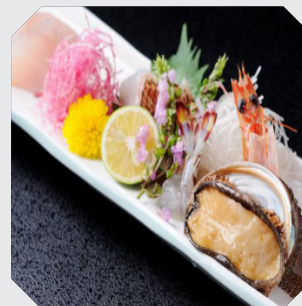
Windows-Equipped as standard with J4125 processor, Android OS with RK3566 processor, this POS equipment is robust and is not affected by harsh environments (grease, dust and residue, kitchen splashes, etc.). Its J4125 processor is energy efficient and its structure allows heat dissipation, thus avoiding the risks of overheating,



which is in line with increasingly demanding environmental standards (limited carbon footprint).

Affordable and offering good value for money given its many advantages, this hardware means profitable investment for the development of durable POS IT assets and infrastructures.

And offer OEM & OEM service !



K1

8 inch mini POS Terminal



Affordable, high-performance, durable POS system

INTEL Celeron J4125 processor fanless (windows)

Rockchip RK3566 processor (android)

PCAP multi-touch panel

1 screen sizes (8" ---4:3 formats)

Low power consumption and carbon footprint

Optional USB Hub (1 serial ports + 4 USB ports + 1 RJ12 for cash drawer+1 HDMI + 1 DC power supply + 1 RJ45 port for lan).

1* inbuilt 58mm thermal printer (58mm *50mm paper)
support ESC/POS & OPOS commands



MODEL	K1w (windwos)	K1a (android)
Processors	Intel® Celeron J4125	Rockchip RK3566
Memory	DDR4 RAM 4GB standard optional: 8GB /16GB	RAM 2GB standard optional: 4/8GB
Graphics chipset	Intel® UHD Graphics	
SSD	NVMe M.2 2242 : 1x128GB standard (1 slot) optional: 256GB/512GB	ROM 32GB standard optional: 64GB/128GB
LCD	8" TFT (1024*768) LED backlighting	
Touch Screen	PCAP panel	
Brightness	300 cd/m²	
Printer	Inbuilt 58mm Thermal Printer Paper size: 58*50mm paper roll Support : ESC/POS commands & OPOS driver Interface: USB+RS232 port	
WIFI/ bluetooth	802.11 b/g/n, 2.4/5G (optional)	802.11 b/g/n, 2.4/5G
Serial ports	1 serial ports	
USB	2 x USB 2.0 + 2x USB 3.0	
LAN	Gigabit Ethernet x 1 (RJ-45)	
HDMI	HDMI display port x 1	No
Cashdrawer	(RJ-12 6 Pins) x 1 / support (9-12V) cash drawer	
Audio	1x Jack	
Power supply	1x DC, 12V, 5A	
Certification	CE, FCC, RCM, UKCA, UL	
Colour	Black	
Dimensions (L x D x H)	196 x 282 x 76 mm	
Weight	2.5-2.8 kg depending on OS and options	
Compatible OS	Windows 10/11 Pro / IoT Enterprise, Linux	Android 8.1 / 11/ 13/ 14

OPTIONS

Speaker reader	1 slot
----------------	--------



Professional POS hardware manufacturer

www.scangle.com

sales@scangle.com